

INTERNATIONAL CENTER FOR MATERIALS NANOARCHITECTONICS

NATIONAL INSTITUTE FOR MATERIALS SCIENCE (NIMS)

www.nims.go.jp/mana

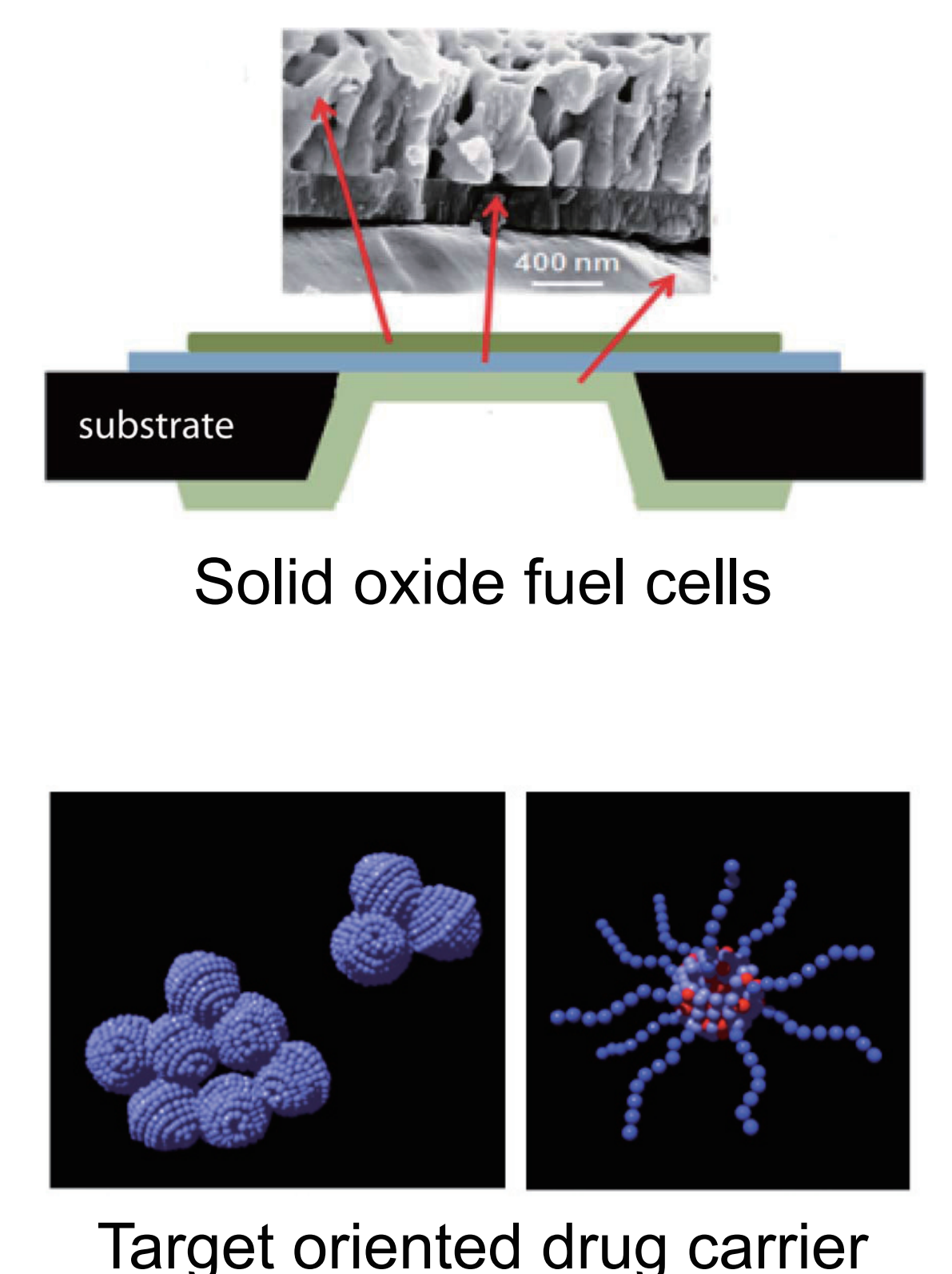
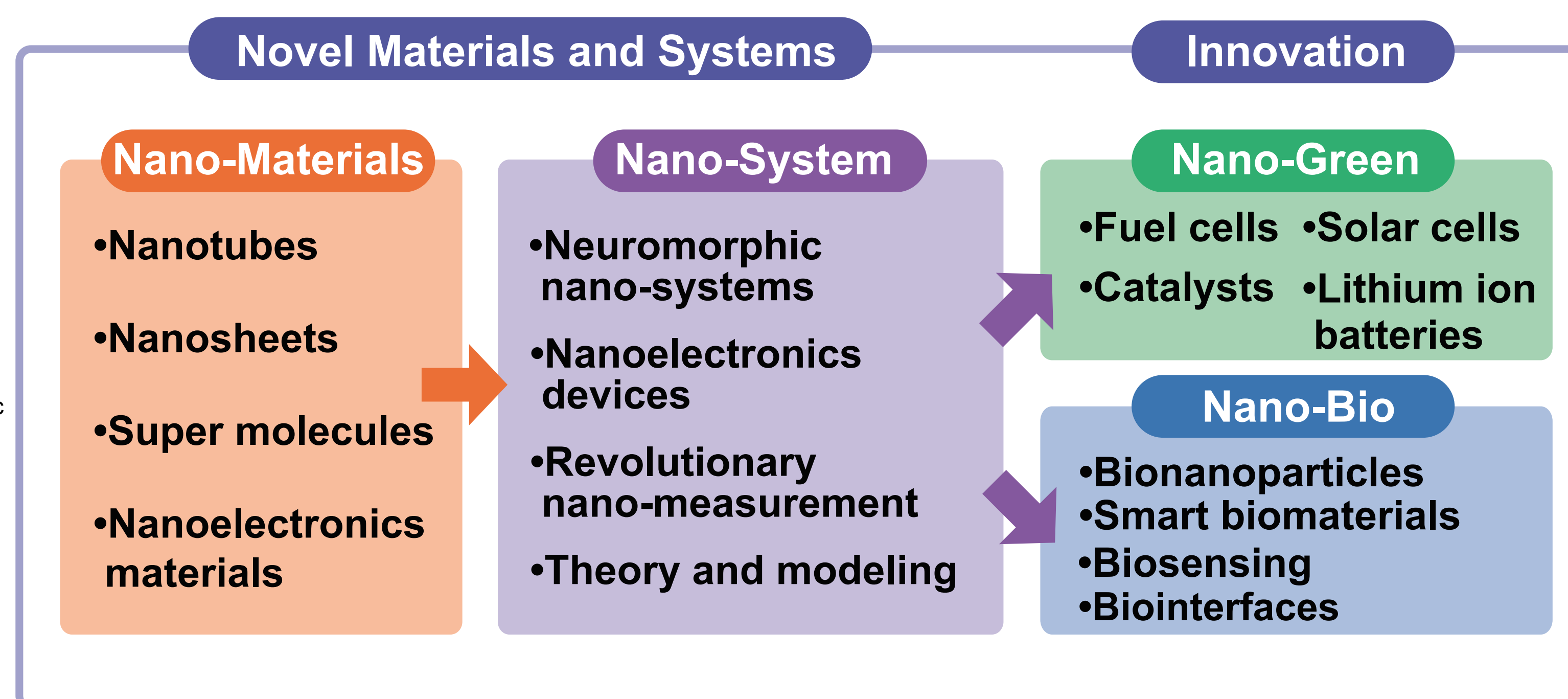
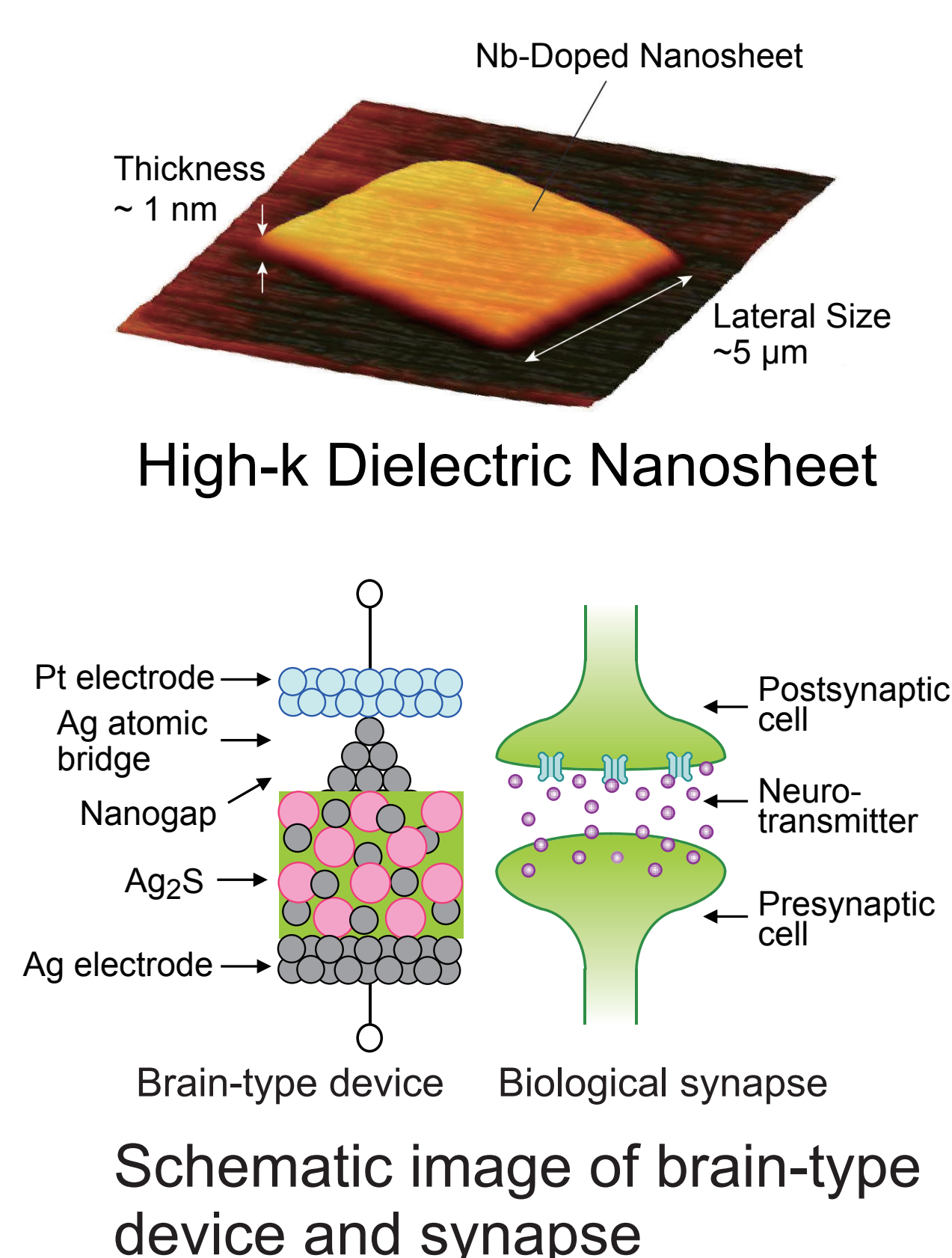
Pioneering a New Paradigm

Materials nanoarchitectonics is a new research paradigm of materials development, which attempts to extract and use the ultimate functions of materials, based on profound understanding of the mutual interaction between individual nanostructures and arbitrary arrangement of those nanostructures.



Masakazu Aono,
Director-General

Research Target of MANA



Melting Pot

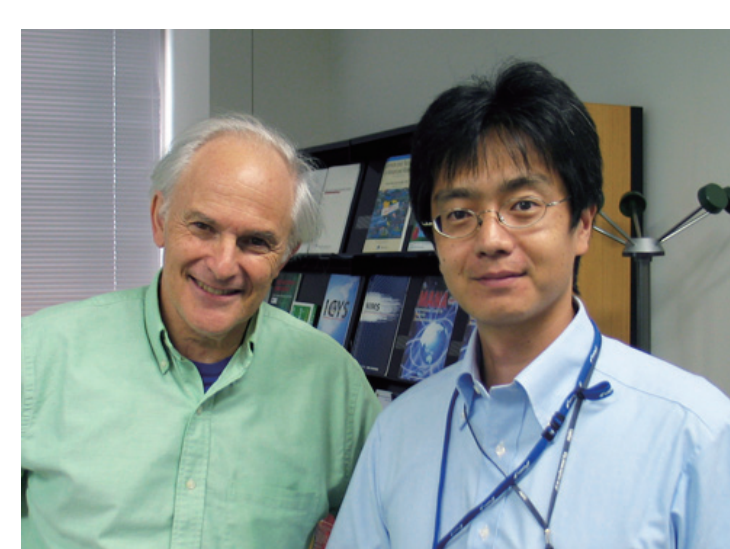
117 of MANA's researchers, or 56%, are foreign nationals hailing from 26 different countries. Multinational researchers from different fields and cultural backgrounds all together at MANA to create a melting pot environment.

Research Workforce		
Position	Number	Non-Japanese
Principal Investigator	25	10
Faculty	68	10
Postdoc	69	59
Graduate Student	44	37
Total	206	117

As of January 1st, 2012

Fostering Young Researchers: 3D System

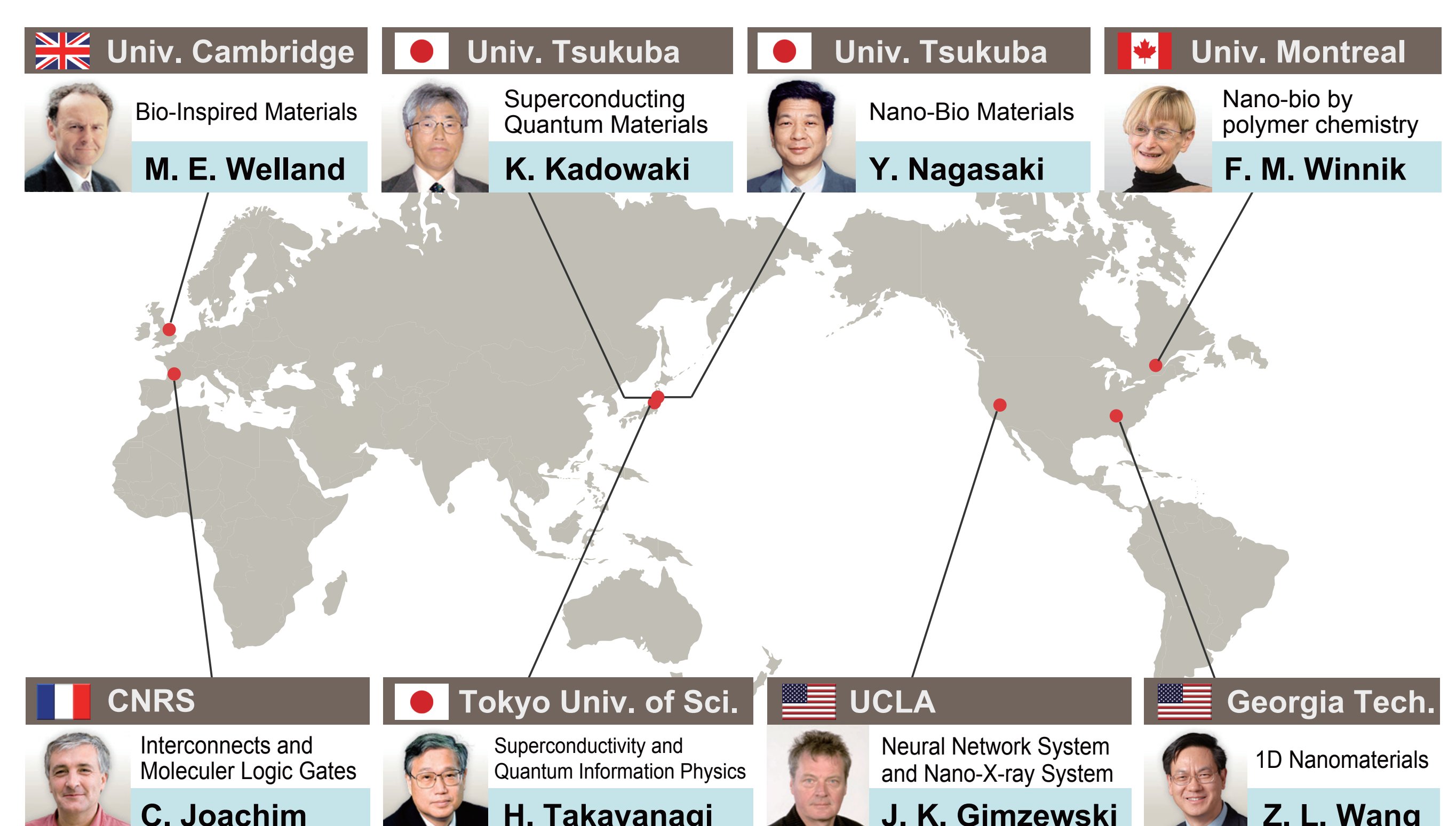
Young researchers at MANA are encouraged to work under the tutelage of external non-NIMS mentors, some whom are stationed overseas. Young researchers typically have 2 mentors (Doble-mentor), are affiliated to 2 research institutes (Doble-affiliation), and research in 2 different fields (Double-disipline). This is called "3D System".



MANA young scientist
(right) and his mentor
Prof. Harry Kroto (left).

Satellite Institutes of MANA

The home research institutes of Principal Investigators invited from institutions other than NIMS are called "satellites." MANA will efficiently promote research at the world's highest level through active collaboration with these satellites.



Foreigner-Friendly Environment

MANA employs experienced staff who are fluent in English and has a wide variety of administrative and technical support systems in place to ensure that researchers of all nationalities can focus on their research without difficulty.



Technical staff providing
research support



World Premier International
Research Center Initiative

MINISTRY OF EDUCATION, CULTURE, SPORTS,
SCIENCE AND TECHNOLOGY (MEXT)

